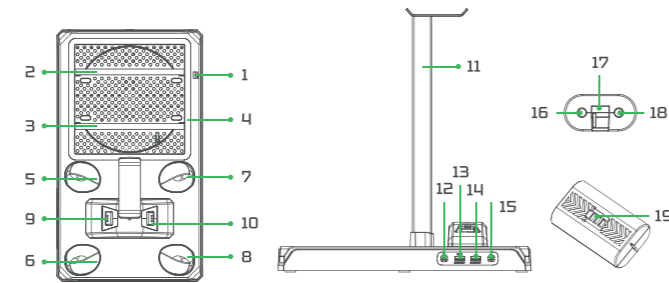


USER MANUAL
XENOFROST
COOLING CHARGING STAND



- 1: TYPE-C charging port.
- 2: Ambient lighting group 1.
- 3: Ambient lighting group 2.
- 4: Ambient lighting group 3.
- 5-6: CH1 - charging indicator.
- 7-8: CH2 - charging indicator.
- 9: CH1 charging connector.
- 10: CH2 charging connector.
- 11: Storage bracket + ambient light 4.
- 12: Touch control switch of Fan.
- 13: USB-A port (date transfer).
- 14: USB-A port (charging only).
- 15: Touch control switch of Lights.
- 16: Battery pack positive pole
- 17: Battery pack metal connector that allow battery can be charged via Type-c port of controller.
- 18: Battery pack negative pole.
- 19: Battery charging connector.

Features

1. It's simple and convenient to charge your controller in this way.
2. Short-circuit and reverse polarity protection function for battery.
3. The product's chip is equipped with a thermal feedback loop circuit to protect the charging of the controller and ensure stable charging.
4. Built-in 2 USB expansion ports, one USB port with data and one USB port dedicated to power, for convenient use.
5. Built-in touch-type fan switch, can control one speed 4000 RPM cooling fan, which can effectively cool down the XBOX Series X/S console.
6. Built-in ambient light, can freely adjust various lighting effects.
7. Built-in 2 controller charging ports, can charge two controllers simultaneously.
8. The product has charging and full-charge indicator functions to ensure that the controllers have sufficient battery power.
9. Support headphone storage and placement.

Main parameters

XENOFROST Stand:	
Power input mode:	XBOX Series X/S console
TYPE-C input port:	5V/3A
Controller charging current:	500MA*2
Controller full charge time:	~4H
USBA charging output port:	5V/1A
USBA2.0 port:	Data port
Fan working voltage/current:	5V/0.22A [MAX].
Fan speed:	4000RPM
Number of racks:	12
Disc rack opening method:	self-locking buckle
Light and Fan switch control:	touch mode
Working environment:	0-55°C.

The total length of the USB-A male to TYPE-C male data cable: ≥30MM

XENOFROST Battery Pack:

Power input mode:	Lithium battery 3.7V/1400mAh
TYPE-C input port:	5V/3A
Controller charging current:	500MA*2
Controller full charge time:	~4H

Light

1. When the fan is working, the fan indicator light is blue; when the fan is turned off, the fan indicator light is off.
2. When the charging stand is turned on without a controller placed on it, there will be no charge indicator light. When a controller is being charged, the indicator light will be green showing when charging, and it will turn into a white light when fully charged.

Function operating instructions

XENOFROST Battery Pack:

1. Battery pack charging method:
 - Dock charging.
 - Direct charging of XBOX ONE controller via Micro port (5V).
 - Direct charging of XBOX Series X/S controller via TYPE-C port (5V).
2. Direct charging of the controller, the battery pack will stop charging after being detected as fully charged.
3. The battery chip uses constant current/constant voltage operation and thermal regulation to maximize the effectiveness of battery management, without the risk of excessive heat.
4. The battery chip adopts a unique internal patented structure to ensure that the chip automatically enters the protection state when the battery is reversed, ensuring that the IC is not broken down and causing self-discharge of the battery to prevent accidents.

XENOFROST Stand:

1. Charging indicator light: When no controllers are in the dock, there will be no charge indication light. When the battery is detected and charging begins, the indicator light will turn green. When the battery is fully charged, the indicator light will turn into a steady white light.
2. Reverse protection: If the battery is reversed after the charging stand is powered on, the corresponding LED light will go out and charging will stop. Once the battery is connected in the correct polarity, it will resume normal operation.
3. Low voltage protection: If the voltage supplied is lower than or equal to 4.2V after the charging stand is powered on, charging indicator light will be solid green, charging will be stopped.
4. The charging chip in the docking station uses a comparator with a 1.5ms filter to continuously monitor the voltage of the BAT pin, and stops cyclic charging when the battery is full. The charging cycle can only restart when the battery voltage drops below 4.1V, ensuring that the battery is maintained at a full charge and avoiding overcharging. This helps to prevent overcharging of the battery.
5. This feature refers to the thermal limiting function of the charging dock's chip. When the chip temperature rises to around 145 degrees, the internal thermal feedback loop will reduce the charging current to a set value. If the temperature rises to 155 degrees or above, the charging current will be reduced to 0 to prevent the chip from overheating and causing damage. This helps protect the charging dock and any devices connected to it.
6. The charging dock has a built-in fan function. By default, the fan starts working when the dock is powered on, and the indicator light turns blue. The fan can be turned on/off by pressing the fan button, and the indicator light will turn on/off accordingly.
7. Light Function: The light group is turned on by default when powered on. Press and hold the light button for 3 seconds without releasing to turn off the ambient light group, press and hold the light button again for 3 seconds after releasing to activate the ambient light group. Press the light button briefly to switch to other colors. The effect of the ambient light group is a cycle mode, with the colors in the following order: red, blue, green, yellow, pink, white, and breathing rainbow lights.
8. Light memory function: The light turns on when power is supplied. Each time the device is turned on, it will start from the last color before the power was cut off, with memory. The same applies if the product loses power.

Usage Note

1. During the charging process, it is important to maintain ventilation and avoid covering the device with clothing, PE bags, or other items.
2. USB2.0 port just for data transfer, not for charging.
3. Please turn off the fan cooling switch when the host is not in use to extend the fan's service life.
4. Please do not use in humid or high temperature environments.
5. It is prohibited to modify or disassemble this product.
6. When the charging slot pins on the base become dirty after prolonged use, clean the contact points with a cloth to ensure proper charging contact.

Assembly drawing

Assembly and usage diagram of battery pack

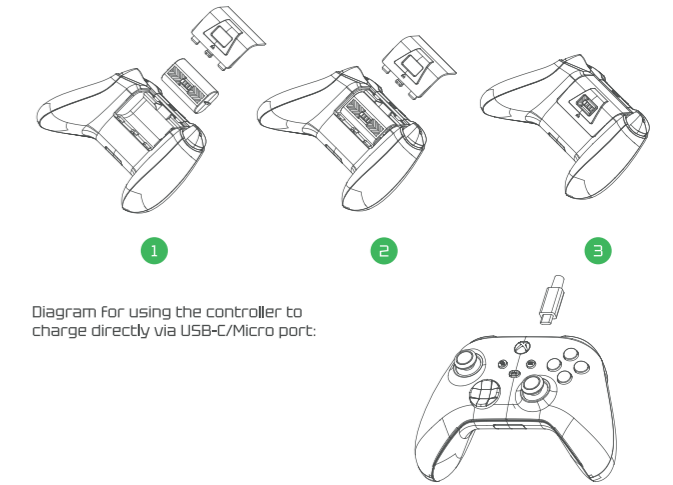
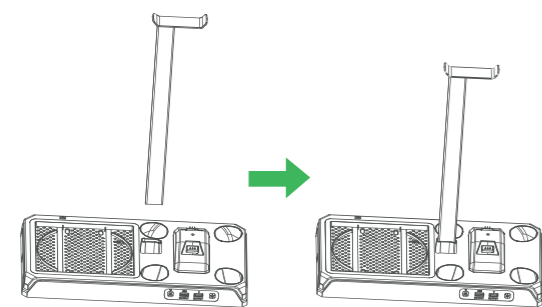


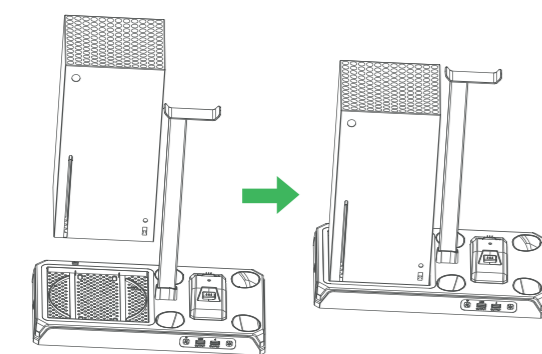
Diagram for using the controller to charge directly via USB-C/Micro port:

Assembly and Charging Usage Diagram for Xbox Series X:

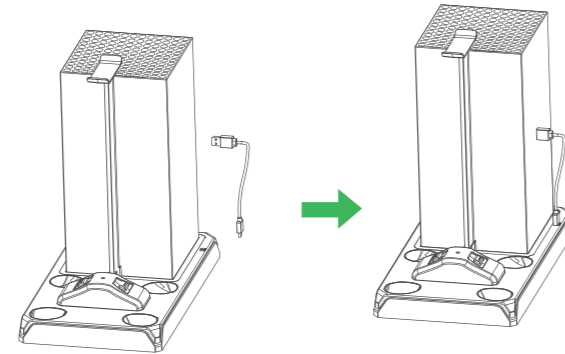
Mounting Stand:



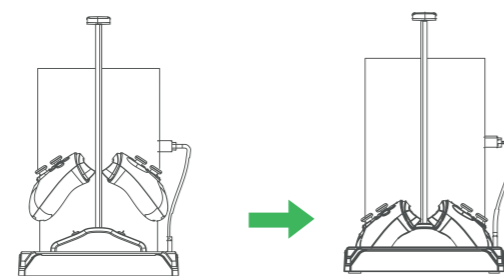
Install Xbox Series X console:



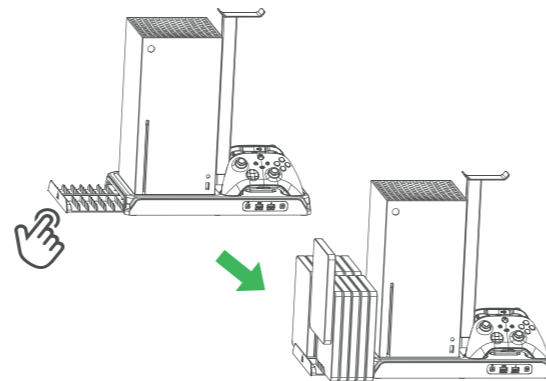
Plug the power cord:



Place controllers:

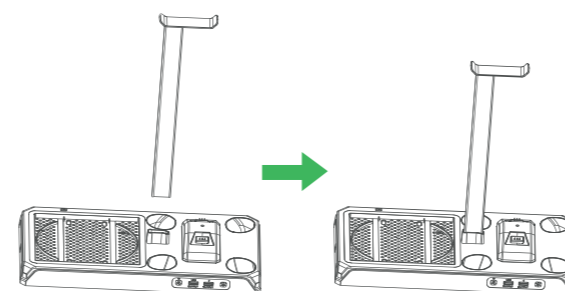


Rack operation:

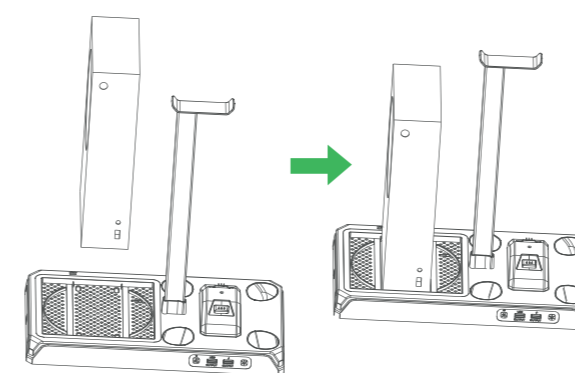


Assembly and Charging Usage Diagram for Xbox Series S:

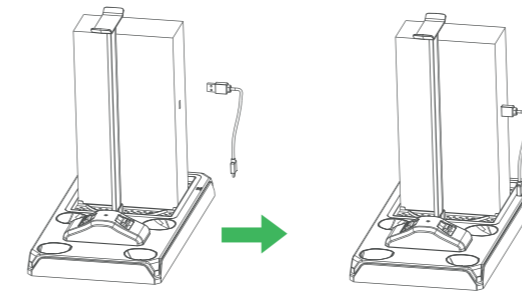
Mounting Stand:



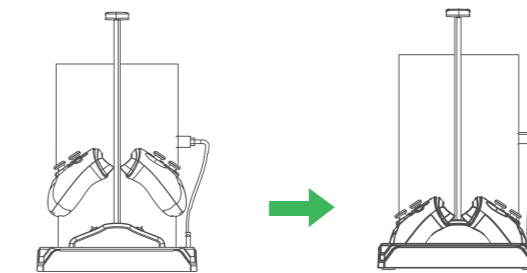
Install Xbox Series S console:



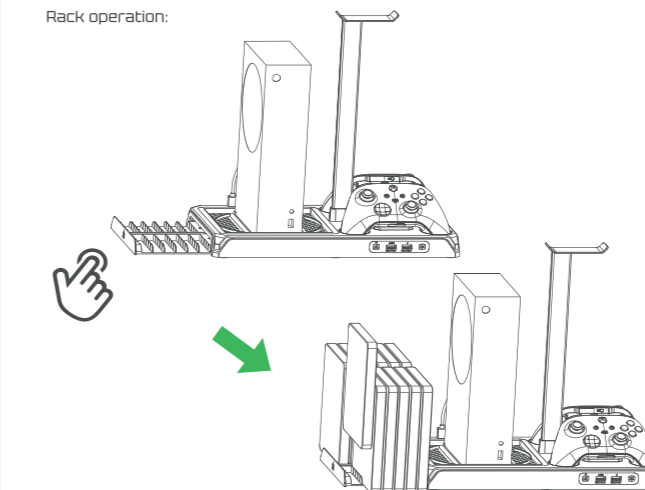
Plug the power cord:



Place the controllers:



Rack operation:



Product List

